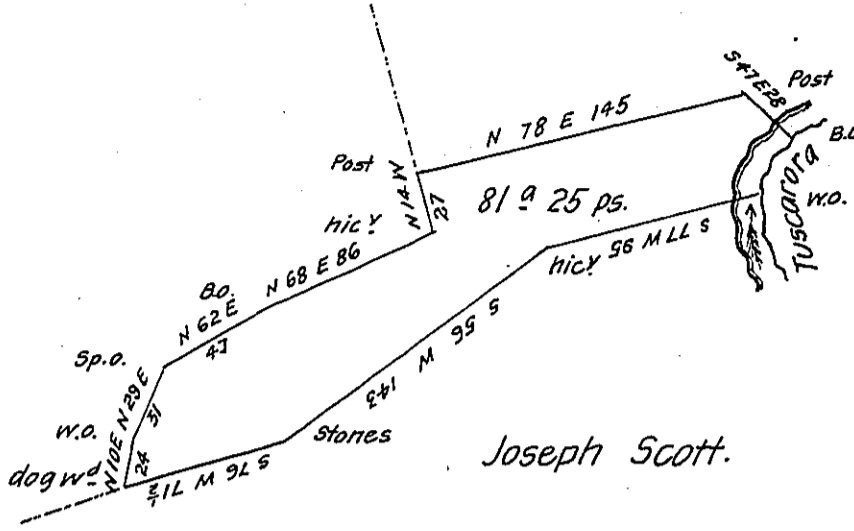


Courses & Distances up
 Tuscarora Creek
 S 65 W 12
 S 30 W 12 1/2
 South 7 1/2

T. McDonald in Right
 of — Scott

Francis Innis



Eighty one acres and 25 perches of land with 6 p^r Cent
 for Roads. Situate in Millford township Mifflin County Surveyed (per
 M. M. Morahan Esq formerly D. S. June 19- & 20th 1816 in pursuance of
 a warrant to Theophilus McDonald Sen^r dated Feb^y 14-1794
 Examined and found correct July 15th 1819

Jno. F. Stewart D. S.

Jacob Spangler Esq.

S. G. of Pennsylvania

IN TESTIMONY that the above is a copy of the original remaining on file in
 the Department of Internal Affairs of Pennsylvania, made
 conformably to an Act of Assembly approved the 16th day of
 February, 1833, I have hereunto set my Hand and caused
 the Seal of said Department to be affixed at Harrisburg,
 this twenty seventh day of March 1906

Luca J. [Signature]
 Secretary of Internal Affairs.